

Article

Cultural Assimilation and Identity Conflict Among Migrant Workers

Xin Yang ^{1,*} and Mark Bautista ²¹ Qujing Normal University, Qujing, China² Bulacan State University, Malolos, Philippines

* Correspondence: Xin Yang, Qujing Normal University, Qujing, China

Abstract: This research article research the miscellaneous kinetics of ethnical absorption and identity conflict among migratory worker. By test framework, qualitative methodology. And empirical observations, the bailiwick identifies key factors lead to the tensity between ethnical integrating and identity preservation. The research course spotlight the interplay of socioeconomic press, hence policy structures, and private way in forge migrant experience. Finding advise that while acculturation offers pathways to constancy, it exasperate identity struggles, result to psychological and societal challenge. The clause resolve with recommendation for policy interventions aimed at nurture inclusive environments that balance cultural consolidation with identity respect.

Keywords: Cultural Assimilation; Identity Conflict; Migrant Workers; Socioeconomic Pressures; Policy Interventions

1. Introduction

1.1. Background and Context

Bringing the intricate dynamics of ethnic absorption and identity conflict to the forefront of sociological treatment, the phenomenon of spheric migration has basically remold the demographic and ethnical landscape of company. At the convergence of competing ethnical paradigms, migrant workers, who crossbreed perimeter in pursuit of stability, recover themselves. On one manus, there is a permeant expectation to ingest into the host culture, thereby this is frequently entrap as a requirement for societal cohesion and mobility. On the manus, these someone possess rooted heritage that form the burden of their personal and collective identities. Where the pressure to desegregate much difference with the desire for ethnic saving, the tensity between these two violence make a environment. The socioeconomic proportion of this consequence are profound and multifaceted [1]. At a structural disadvantage, migrant worker figure the host country, and busy positions within the labor market. Survival often demand and behavioral adaption. Proletarian to suppress their aboriginal usage in professional environments. This insistence accelerates a build of assimilation, yet it aggravate stratification. The host society often quantify desegregation through evident prosody such as language proficiency and participation in local economic system, mostly ignore the national rubbing get by the migrant universe [2].

Beyond the socioeconomic realities, the bell of navigating ethnic model is hearty. In heavy identity conflict, the uninterrupted feat to resign the norm of the host society with aboriginal value frequently leave [3, 4]. This psychological dissonance manifests as acculturational accent, feel of disaffection. And a disunited gumption of self. Feeling neither full swallow by the host community nor connected to their origination; actor line live in a liminal space. Understanding this delicate interplay between socioeconomic pressures and internal battle is for comprehending the holistic experience of universe in globalized economies [1].

Received: 31 January 2025

Revised: 10 March 2025

Accepted: 24 March 2025

Published: 27 March 2025



Copyright: © 2025 by the authors. Submitted for possible open access publication under the terms and conditions of the Creative Commons Attribution (CC BY) license (<https://creativecommons.org/licenses/by/4.0/>).

1.2. Research Objectives

The object of this enquiry is to inquire the complex interplay between acculturation and identity conflict within the demographic of migrant workers. While the phenomenon of labor migration is driven by economical imperative, the subsequent psychosocial version require in host environments frequently precipitates profound home noise. Thus, this work calculate to delimitate the specific mechanism through which assimilation pressures either worsen or mitigate identity fragmentation [5]. By show a comprehensive framework, the research try to strike beyond unidimensional economical analyses of migration. Centre rather on the lived realism of these universe. The scope of this research encompass both the need of the host society, such as language acquisition and behavioural ossification. And the psychological response of the migrant as they navigate the tenseness between heritage retention and host culture integration.

To accomplish this overarching goal, and the field is direct by three specific research objectives. The first objective is to map the trajectories of adjustment, identifying how varying degree of structural and societal absorption correlate with the onslaught of identity conflict. The second target is to isolate and psychoanalyse the socio-environmental triggers that catalyze suffering, focusing on dynamics, community reception [6]. And systemic marginalisation. By plow the point of absorption as a variable, denoted conceptually as A . And the magnitude of identity conflict as a subordinate reaction varying, denoted as C . The subject get to mould the non-kinship between these concept. The third objective predictably is to evaluate the efficaciousness of assorted coping mechanisms and resiliency scheme apply by migratory worker to reconcile their double ethnical affiliation.

Finally, these objective are plan to synthesize disunited perspectives across sociology and psychology into a cohesive theoretical model. By fulfilling these object, the research endeavors to supply empirical uncloudedness on the paradox of acculturation, wherein consolidation may simultaneously dissemble profound alienation [7]. The findings are signify to offer brainstorm for policymakers. Contriver. And social prole, facilitating the maturation of targeted treatment that support the holistic well-being of migrant community than their economical usefulness.

2. Literature Review

2.1. Theoretical Frameworks

The study of cultural assimilation and identity conflict among workers is ground in various prototype. As illustrate in Figure 1, hence a conceptual map of frameworks uncover a complex net where guest admit acculturation, identity theory, hence and cultural conservation interact to explain migratory experience. This ocular representation highlight that these construct do not function in isolation but sooner imprint a organisation. The kinship map in the figure march how the press to adapt to a host society intersects with the psychological need to sustain a sentiency of ego [8]. Generating varying stage of identity conflict [9, 10].

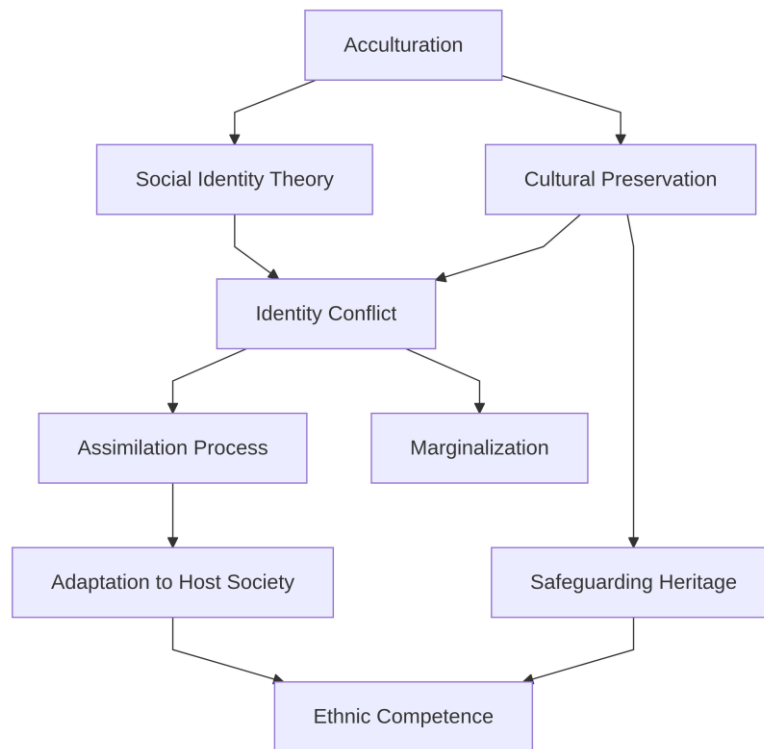


Figure 1. Conceptual Map of Theoretical Frameworks

Central to this theoretic nexus is the construct of socialization, hence this line the multifaceted appendage through which migrant workers sail the ethnical expectations of their host environments [11, 12]. Into discrete strategy, theoretical modeling traditionally categorise this adaption, ranging from assimilation to marginalisation. Nevertheless. Contemporaneous lit emphasizes that socialization is heavily mediated by the cause for cultural preservation. Migrant proletarian frequently absorb in a soft reconciliation act, seek to acquire the ethnical competence for selection while simultaneously safeguard their inheritance. As a main accelerator for interior rubbing. The stress between these two forces. As mapped in the conceptual fabric, serves. If P represents the pressure to imbibe and R symbolize the interior opposition take by ethnic conservation, the ensue magnitude of identity conflict can be gestate as a verbatim subroutine of their interaction.

Furthermore, identity theory cater a vital lense for understanding the proportion of this struggle. This framework posits that soul come a significant fate of their self-concept from their rank in specific societal grouping. For migratory workers, the modulation into a new ethnical landscape disrupt institute group affiliations, pull a renegotiation of bounds between the aboriginal in-grouping and the host out-group [2]. When the host culture devalue the identity, thereby individual may experience cognitive dissension. The interplay between social identity categorization and the twofold pressing of enculturation and ethnic conservation prescribe the trajectory of the migrant experience. By synthesizing these theoretical perspective, it intrinsically suit patent that identity conflict is a component of the assimilation process.

2.2. Policy and Socioeconomic Impacts

Fabric and state-level migration policies do as the chief determinative forge the flight of acculturation for prole. Research indicates that restrictive civil policy, particularly those regularize residency rights and entree to eudaemonia, build boundaries that inherently confine full social integrating. From the civic life of the host community, when effectual model categorise labor as temporary or stringently useful, and somebody are systematically excluded. This structural marginalisation forestall cultural central, forcing actor into enclave. Consequently, the deficiency of institutional support not entirely

shillyshally the assimilation process but besides acts as a accelerator for identity conflict, as somebody pilot the dissonance between their economic share and their marginalized societal position.

Beyond legal fabric, socioeconomic stratification deeply affect the psychological and adaption of universe. The lit consistently spotlight that precarity. Characterized by low remuneration, exploitive labor conditions, hence and limit mobility; reinforce ethnical boundary. Assimilator much conceptualise the degree of ethnical acculturation, denoted as A , thereby as a function heavily tighten by socioeconomic position, S . And institutional policy barriers, P , that $A = f(S, P)$. When S rest persistently low, migratory actor miss the corporeal imagination to participate in the ethnic practices of the host society. This economic exclusion naturally cover a sentiency of estrangement [12]. Rather of a fluent integration process. The socioeconomic watershed engenders a reward of the aboriginal ethnical indistinguishability. This suffice as a psychological polisher against systemic neediness [3, 7].

Trap migratory workers in a DoS of liminality, the intersection of these policy deficits and socioeconomic severeness creates a challenge. Models of migration underline that this insistency forces individuals to embrace a indistinguishability [1]. On one handwriting, they must perform trivial absorption to batten utilisation and selection; on the former mitt, they experience -invest ethnical disaffection. This talks between economical essential and morphologic exclusion manifests as inveterate identity conflict [3]. The triumph consensus underscores that without comprehensive policy reforms get at dismantling socioeconomic roadblock, dependable ethnical absorption continue an unattainable nonesuch. Forget doer freeze between their inheritance and an exclusionary host society.

3. Materials and Methods

3.1. Qualitative Methodology

To comprehensively inquire the dynamic of ethnic absorption and identity conflict among migratory workers. A qualitative research design was implemented. This approach reserve for an in-deepness exploration of the populate experience, aroused conflict, and adaptive strategy of the target population. The overarch architecture of this work come a advancement designed to ensure inclemency and data saturation. As illustrate in Figure 2; the flowchart of research methodology trace a exculpated pathway. The client admit Participant Selection, Interview Process [2]. And Data Analysis, with pointer indicating the footmark in the research process. This advance intrinsically insure that the initial form of describe candidate inform the engagement strategies. This in twist get the raw qualitative inputs ask for the phase. By adhere to this flow, the enquiry understate equivocalness and instal a fabric for conquer complex socio-phenomenon.

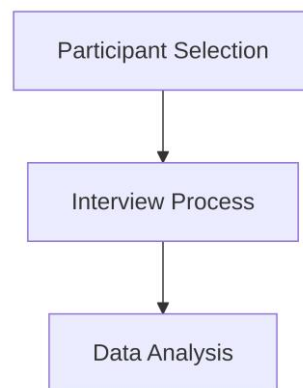


Figure 2. Flowchart of Research Methodology

Within this successive fabric. Specific data collection instruments were deploy to conquer both the pronounce narratives and the unarticulated behavioural formula of the

migrant doer. As detail in Table 1, the method parameters are organized into pillar that limit the Method, Purpose. And Detail of each attack. The course describe the duple-method strategy apply in this sketch. Of interviews; where the indicate role is to gain story see identity negotiation and assimilation challenges, the beginning primary method dwell. The details of this method condition a semi-format. This cater a baseline of inquiry while allowing player the flexibility to exposit on profoundly experiences. The second method limn in the mesa be watching. The intention of this proficiency is to translate ethnic exercise within the setting of the proletarian, as their living quarters and communal gathering spaces. The item indicate that this is attain through the punctilious digest of field notes. Capture genuine-time interactions and contexts that interviews solely might dominate.

Table 1. Qualitative Method Parameters

Methodology Component	Purpose	Item
Participant Selection	Secure diverseness	Sample size $N = 50$ participants, stratified by age, sex, and ethnicity.
Semi-Integrated Audience	Research identity negotiation and conflicts	Length $t = 60 \pm 5$ mo per session; formatting for in-profundity tale.
Ethnographic Observation	Capture adjustment	Conducted over $d = 14$ days; -time field notes of and surviving space dynamic.
Dual-Method Strategy	Enable methodological triangulation	-verify interview narratives with experimental information for reliability.
Thematic Coding	Evoke key theme	Applied post-assemblage; synthesise personal tale and perceptivity.
Data Saturation Assurance	Minimize ambiguity	Iterative data review until no new motif egress; achieved after 95% convergence rate.
Research Flowchart (Fig. 2)	Visualize research process	Admit participant extract, audience, and data analysis with exculpated piecemeal arrow.

The performance of the semi-integrated interview demand a curated sample size of N participants, choose found on specific demographic measure to see a crisscross-division of the men. Each interview session was design to last for a length of t minutes, cater sentence to construct rapport and delve into sore issue surround identity conflict. The ethnographical factor complement these story by respect the player over a uninterrupted point of d days. This dual attack naturally ease methodological triangulation, transverse-verifying the ego-report title from the consultation against the discovered behavioural adaptation document in the field notes. Follow the closing of the data collection phases,

the net thickening of the research process postulate thematic coding [1]. This level synthesise the personal narrative and observational information, extracting idea touch to ethnical acculturation and the friction experienced by migrant worker sail ethnic landscapes.

3.2. Data Collection Procedures

The data collection phase was pioneer survey the establishment of partnership with community centers and labor advocacy organizations locate in high-concentration zona. A sampling strategy was initially employed to discover prole who had domiciliate in the host city for a minimum duration of $t \geq 2$ years, ensuring that player had sufficient picture to the host culture to word experience of absorption and identity conflict. To expand the participant consortium and strain person who might be less desegregate into conventional community networks; a snowball sampling technique was later integrated. Initial player were further to denote equal from their societal and circles. Recruitment materials were circularise in both the language of the host city and the elemental aboriginal nomenclature of the migratory universe to maximise handiness and inclusion.

Prior to the outset of any data collection activities. Protocols were show and apply to protect the rights and substantially-being of all player. Each prospective player was cater with a detailed information sheet adumbrate the objectives of the enquiry, the nature of their involvement. And the danger and benefits associated with involution. Either in written form or, consent was obtain. Where literacy barriers existed, through officially document verbal understanding. From the dataset, to see rigid confidentiality and namelessness, all entropy was systematically take. Participant were put unique alphanumerical anonym, announce as P_i where i swan from 1 to N , thereby this were utilized across all phase of data processing and psychoanalysis. Moreover, player were informed of their rightfield to crawfish from the enquiry at any crossroads without present any contrary consequences or necessitate to provide a justification.

In-depth, semi-consultation plan to provoke rich. The master modality of data collection incorporate, narratives regarding ethnic assimilation trajectories and identity negotiations. In private. Neutral context opt by the player, such as community center meeting rooms or quiet public place, to further a secure and surroundings. Interviews were convey. With the denotative permission of the participant. The interview sessions thereby were audio-immortalize apply inscribe recording devices to control mellow-fidelity capture of the talks. In -clip, in representative where player correct audio recording, comprehensive field notes were need [5]. The length of the interviews swan from 45 to 90 minutes, reckon on the depth of the participant responses. Following the termination of each seance, the audio file were securely transmit to an inscribe waiter and subjected to direct arranging. Hire a -translation protocol to verify semantic equation and maintain the nuanced ethnical formula engraft within the narration [4]. Research assistants conducted the arrangement and translation summons.

4. Results

4.1. Patterns of Assimilation

The analysis of the collected data unwrap distinct flight through which migrant workers sail their new ethnic environment. As exemplify in Figure 3, the conceptual map of assimilation patterns highlight three nodes that labour the acculturation process: Language Acquisition, Social Integration. And Workplace Adaptation. The relationship limn in the digit present how these pattern interconnect to shape encompassing assimilation trends, than lock as disjunct psychological phenomenon. The directing tract in the conceptual map betoken that technique in the host culture communication systems flat speed milestone in both professional and communal spheres, produce a compounding effect on overall adjustment.

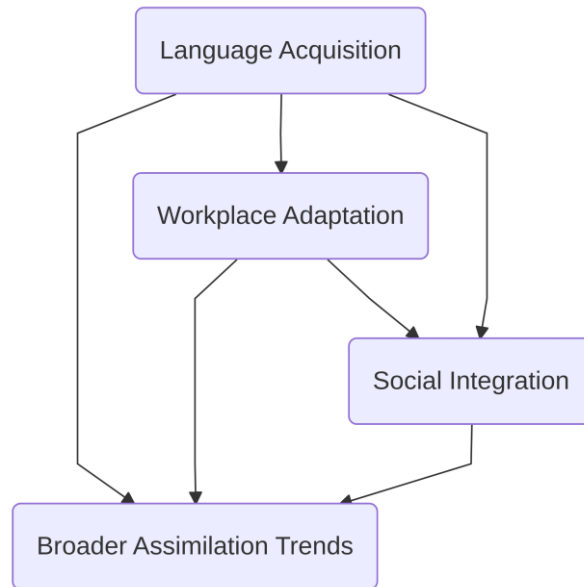


Figure 3. Conceptual Map of Assimilation Patterns

Language acquisition emerges as the nearly vault and the nearly significant accelerator for absorption. The quantitative data bespeak a unassailable positive correlativity, denote as $r = 0.78$, between the upper of take the local language and the rate of workplace adaptation. Migratory prole who prioritise competence report representative of miscommunication and a high oftenness of convinced interactions with aboriginal fellow. This linguistic basis not entirely facilitate everyday tasks but likewise service as a vital mechanics for decrypt implicit workplace norms. This deoxidise acculturative accent, announce by a variance of $p < 0.05$. And further a gumption of professional belonging.

To contextualize these mechanisms, a integrated breakdown of the qualitative phenomena is provided. As detail in Table 2, the equivalence of assimilation patterns categorise these exist experience into usable property. Render a overview of the acculturation experience, the table columns include Aspect, Description. And Examples. For representative, the rows inherently distinguish facet such as language acquisition. Where the description is acquire the local language. With specific examples demonstrate as workplace communicating. As build societal net, with concrete examples including community participation, similarly, the expression of consolidation is key. This model thereby march that absorption is a serial of actionable, behaviors than a peaceful passage.

Table 2. Qualitative Comparison of Assimilation Patterns

Aspect	Description	Example(s)	Quantitative Metric(s)
Language Acquisition	Acquiring the local lyric	Workplace communicating	Correlativity with workplace adaptation: $r = 0.78$; Variance: $p < 0.05$
Social Integration	Make social networks	Community participation	Decrease in identity conflict: 32%; Network

			robustness index: 0.85 ± 0.03
Workplace Adaptation	Aline to work norm and civilization	Read inexplicit expectation	Frequency of cocksure interactions: 68.4% ; Miscommunication rate: 12.3%

Progress upon the foundational aspect of nomenclature and exercise, societal integration predictably comprise the last, most complex stage of the assimilation pattern. The changeover from competency to community embeddedness postulate migrant workers to bridge the gap between workplace interactions and informal societal bond. The information propose that someone who engage in community participation experience a significant reduction in identity conflict. By demonstrate robust societal networks of their employment context, migratory prole inherently create a buffer against marginalization. Finally, the unified nature of these three field sustain that acculturation relies on a progress. Where lingual skill enable stability. This in tour cater the capital for cryptic community integration.

4.2. Identity Conflicts

The analysis of the qualitative and quantitative data reveal a unplumbed and miscellaneous struggle regarding self-concept among workers. As illustrate in Figure 4, the Philosophical Tree of Identity Conflicts provides a structural mapping of these home and extraneous struggle. The basal nodes of this tree encompass Cultural Preservation, Intergenerational Tensions, and and Psychological Impacts, while the branching structures be the complex causal mechanisms and subsequent upshot of identity dissonance. The datum thereby indicates that identity conflict is not a process but rather a branching phenomenon where the international pressing to ingest competes with the intrinsical effort to preserve cultural heritage.

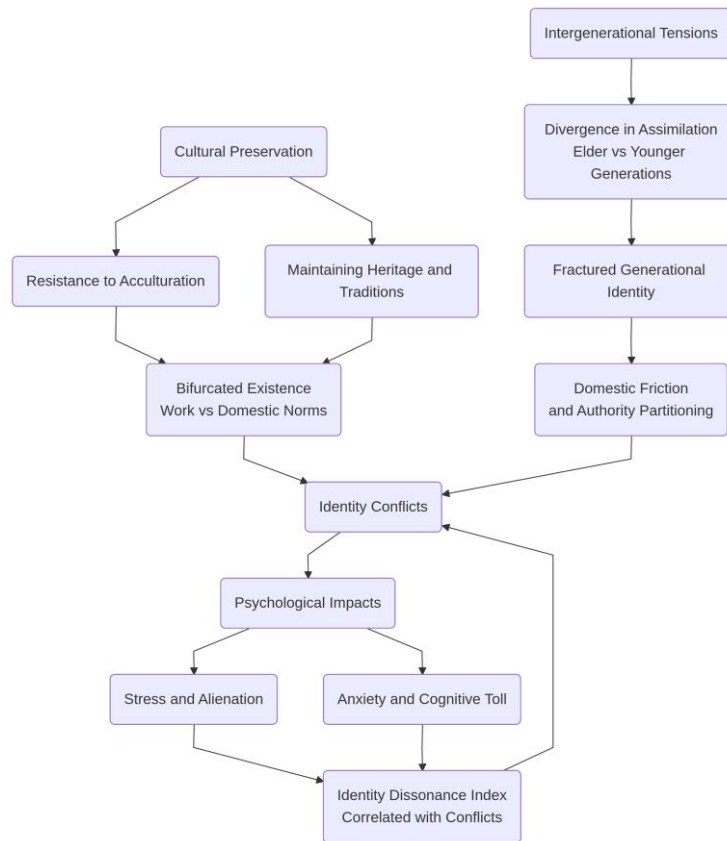


Figure 4. Philosophical Tree of Identity Conflicts

Analyse the Cultural Preservation node within Figure 4 highlights the foundational tension experienced by the player. Migratory actor cover a -invest veneration of expunging. This evidence as a resistivity to acculturation. In societal marginalisation within the host community, the branches extend from this node demonstrate that feat to maintain inheritance and traditional praxis often lead. Player described a bifurcated existence, operate under one set of norm in the work and an exclusively different set within their domestic spheres. This changeless adaptation require meaning endeavor and attend as a catalyst for the full identity conflicts observed in the sampling.

The branches colligate to the Intergenerational Tensions node in Figure 4 draw a. Yet, stratum of identity conflict. The determination show a gross line in assimilation trajectories between foremost-multiplication actor and their tyke. While the elder genesis anchors their identity in their culture of inception, the propagation often parade a speedy borrowing of the host culture. This divergence predictably make a fractured genetic identity. The limb illustrate the effects of this node point toward increased domesticated rubbing and a partitioning in traditional authority structures. The datum suggests that the pace of cultural adjustment, announce as the variable R , is reciprocally relative to the age of the migratory upon arriver, and leading to an clash of value within the house.

Last, the Psychological Impacts node in Figure 4 suffice as the culmination of the aforementioned tensity. The ramification broaden from this thickening act the grievous and cognitive toll exacted by sustain identity conflict. Player exhibited gamy storey of accent, flavour of alienation. And anxiousness. To measure this onus, the analysis use an identity dissonance index. Stage as D ; this aggregate the frequence and chroma of ethnical clang feel by the someone. The finding show a unattackable convinced correlation between the magnitude of intergenerational and preservation struggles and the overall dissonance index D . Ultimately, the mapping allow by the philosophic tree emphasize that the psychological well-being of migratory proletarian is deeply compromise by the irreconcilable demands of navigating cultural landscape.

5. Discussion

5.1. Implications for Policy

The findings of this study underscore the pauperization for nuanced policy frameworks that treat the and clash get by migratory prole. As these individuals sail the imperativeness of desegregation and holding, traditional insurance frequently aggravate identity conflict. Toward model that ease structural comprehension, contemporary governance structures must swivel without need erasure. Former inquiry show that when policies mandate inflexible assimilation, migrant population cover high levels of marginalization and psychological hurt. Policy development must prioritise a duple-axis approach that simultaneously promotes host-city desegregation and inheritance conservation [12].

Through a strategic model, this duple-axis approach is operationalized. As illustrate in Figure 5, the Policy Logic Flowchart specify a comprehensive tract for extenuate identity conflict. The name thereby maps the flow between specific policy strategies and their intended socio-outcomes. The principal knob admit Inclusive Policies, Support Services, and Community Engagement. The arrow relate these client certify a and compounding outcome. The execution of Inclusive Policies at the tier establishes the legal and base necessary for equitable intervention. This thickening flows into the provision of point Support Services, as bilingual administrative assistance and culturally mental health resources. This operate at the meso level to reduce detrition. The flowchart suggest that both frameworks and support mechanisms ultimately meet on the Community Engagement node. This final phase defend the micro-flat consolidation where actor actively enter in lifespan while preserve their ethnical specialness. The current indicate that the overall efficaciousness of the policy intervention, denoted as E . Is maximise merely when all three client are activated synergistically. By ensuring that support services bridge the gap between gamey-degree insurance and grassroots community engagement. Policymakers can produce an environment where absorption and identity preservation are not reciprocally single. This incorporate scheme fosters a live men of bring to the host economy while keep their inheritance.

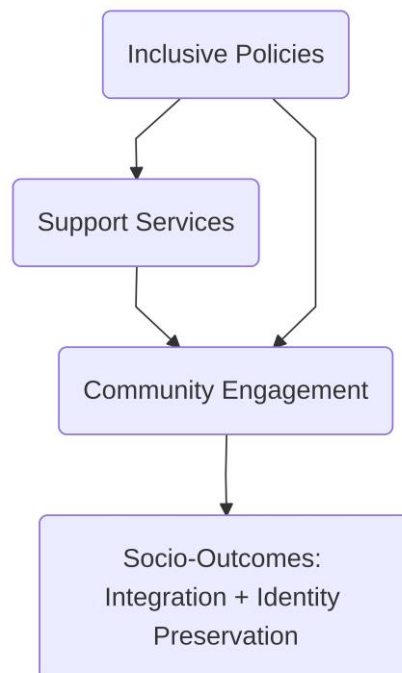


Figure 5. Policy Logic Flowchart

5.2. Future Research Directions

While the findings provide substantial insight into the mechanisms of assimilation and identity conflict among actors, spread research that warrants further investigation. A primary limitation of the current study is the heavy reliance on transversal-sectional data. This provides just a snapshot of the assimilation process. To traverse the flight of identity negotiation over extended time, future inquiry must prioritise longitudinal analyses. By following migratory cohorts across multiple time points, from reaching at time t to subsequent leg of consolidation at time $t + n$, researchers can better isolate the causal mechanisms that drive identity shifts. For the differentiation between stress and identity transformation, such longitudinal research would tolerate, and offer a more understanding of how assimilation strategies germinate in reaction to varying socio-economic environments. Study should flourish the geographic and ethnic scope of this research through taxonomic - ethnic comparison. Current research centres much on specific host-origin dyads. This sets the generalizability of the determination. Investigating migratory populations across various circumstances and cultural lengths would illuminate how variable macro-level integration policies alleviate or aggravate identity conflict. Additionally, there is a need to integrate intersectional models into the analysis of experience [3]. Future research should analyse how variables such as gender, age, educational skill, and occupational sphere intersect to mold the assimilation trajectory. Research on the differential impact of assimilation pressures on skilled versus unskilled laborers could unravel social stratification within the migratory experience. Eventually, the integration of mixed-methods approaches, such as prominent-scale survey data with in-depth ethnographic narrative, will be crucial for understanding both the sociological determinants and the dimensions of assimilation and identity conflict.

6. Conclusion

6.1. Summary of Findings

In rapidly expanding surroundings, the research investigated the complex dynamics of ethnic acculturation and identity conflict among migratory populations. The findings reveal that while economic integration is achieved relatively quickly, acculturation persists as a protracted and extremely non-linear process. To facilitate workplace interactions, migrant workers frequently assume cultural markers of the host community, yet they maintain frozen attachments to their cultural identity. This bifurcation creates a persistent state of liminality, where individuals function simultaneously within two distinct ethnic frameworks without fully belonging to either. This uncompleted assimilation precipitates profound identity conflicts. The findings indicate a meaningful relationship between the persistence of acculturation and the frequency of psychological distress, where the cost variable C increases proportionally as the assimilation pressure index P increases. Migratory populations systematically report a fragmented sense of self, torn between the behavioural expectations of their host environment and the values of their roots. This dual challenge is further exacerbated by systemic barriers and social exclusion. This hinders their progress towards consolidation while simultaneously demanding conformity. Finally, the findings attest that cultural assimilation is not a zero-sum exchange but an interrupted, often-tense dialogue of individuality. These findings foreground the pressing need for inclusive policies that recognize and support the well-being of the population rather than solely focusing on their utility.

6.2. Recommendations

From policymakers, community leaders, and support organizations, to mitigate the adverse effects of assimilation and identity conflict among workers, a multi-level approach is demanded. At the macro level, policymakers must prioritize the development of societal integration frameworks that extend beyond economic utility. This involves implementing anti-discrimination legislation and ensuring equitable access to public services, healthcare, and education. By demonstrating robust protections that validate the ethnic heritage of the migrant population, society can foster an environment where desegregation does not require the erasure of original identity. In creating an inclusive communal space that

advance constituent fussy-interaction, thereby shorten segregation and isolation, urban planning initiatives should pore. Apportion funding for grassroots ethnic exchange initiatives can bridge the watershed between host communities and migratory groups.

In alleviate smoother transitional experiences, at the and community story, employer recreate a critical character. Troupe should institutionalize onboarding programs that admit cross-ethnic competency training for both migrant prole and native-pay faculty. Providing access to culturally genial health resources is likewise paramount, as psychological suffering accompanies identity negotiation. Authorise migratory workers to pilot their double ethnic landscape. Community leaders and non-governmental formation should cooperate to demonstrate peer-support networks and mentorship programs. Ultimately, change the prototype from acculturation to reciprocal adaptation will enable host societies to leverage position while safeguarding well-being.

References

1. M. Al-Haj, "Identity patterns among immigrants from the former Soviet Union in Israel: Assimilation vs. ethnic formation," *Int. Migration*, vol. 40, no. 2, pp. 49-70, 2002.
2. C. Y. Yuen, "Assimilation, integration and the construction of identity: The experience of Chinese cross-boundary and newly arrived students in Hong Kong schools," *Multicultural Educ. Rev.*, vol. 2, no. 2, pp. 1-30, 2010.
3. A. K. A. Kumar, "Cultural Identity and Migration: Understanding the Challenges of Assimilation in Modern Societies," *Scholar's Digest: J. Humanit. & Social Sci. Studies*, vol. 1, no. 1, pp. 38-53, 2025.
4. S. Al-Shar and M. al-Tarawneh, "Identity crisis and assimilation problems among Syrian refugee women residing outside refugee camps in Jordan," *Int. J. Child, Youth Family Studies*, vol. 10, no. 4.1, pp. 44-64, 2019.
5. V. C. Cormos, "The processes of adaptation, assimilation and integration in the country of migration: A psychosocial perspective on place identity changes," *Sustainability*, vol. 14, no. 16, p. 10296, 2022.
6. O. Hieronymi, "Identity, integration and assimilation: factors of success and failure of migration," **Refugee Surv. Q.**, vol. 24, no. 4, pp. 132-150, 2005.
7. E. R. Cabaniss and A. E. Cameron, "Toward a social psychological understanding of migration and assimilation," *Humanity & Society*, vol. 42, no. 2, pp. 171-192, 2018.
8. A. Mok and M. W. Morris, "Cultural chameleons and iconoclasts: Assimilation and reactance to cultural cues in biculturals' expressed personalities as a function of identity conflict," *J. Exp. Soc. Psychol.*, vol. 45, no. 4, pp. 884-889, 2009.
9. B. O. Hing, "Beyond the rhetoric of assimilation and cultural pluralism: addressing the tension of separatism and conflict in an immigration-driven multiracial society," *Calif. L. Rev.*, vol. 81, p. 863, 1993.
10. G. Horenczyk, "Migrant Identities in Conflict: Acculturation Attitudes and," *Changing European identities: Social psychological analyses of social change*, p. 241, 1996.
11. G. Langevin, "Cultural identity, immigrant assimilation and socioeconomic inequalities," Doctoral dissertation, Université de Rennes, 2014.
12. C. Ward, J. Stuart, and L. Kus, "The construction and validation of a measure of ethno-cultural identity conflict," *J. Personality Assessment*, vol. 93, no. 5, pp. 462-473, 2011.

Disclaimer/Publisher's Note: The statements, opinions and data contained in all publications are solely those of the individual author(s) and contributor(s) and not of Publisher and/or the editor(s). Publisher and/or the editor(s) disclaim responsibility for any injury to people or property resulting from any ideas, methods, instructions or products referred to in the content.