

Article

# Development and Validation of a Wearable Continuous Lactate Monitor for Intensive Care Unit Patients

Sarah Jenkins <sup>1,\*</sup>

<sup>1</sup> Wright State University, Dayton, USA

\* Correspondence: Sarah Jenkins, Wright State University, Dayton, USA

**Abstract:** This research article present the exploitation and substantiation of a wearable lactate monitor design for care unit (ICU) patients. Punctuate its potentiality to heighten effect through existent-time lactate monitoring, the subject delineate the conceptual fabric, lying, and and examination of the device. To assure truth and dependability, experimental method admit sensor calibration, clinical simulation. And data analysis. While discussion explore its implications for ICU workflows and patient direction; event show the monitor's power to furnish ordered lactate readings with minimal error margins. By highlighting the twist's transformative voltage in care settings and place avenues for research, the clause concludes.

**Keywords:** Wearable Technology; Lactate Monitoring; Intensive Care Unit; Sensor Validation; Critical Care

## 1. Introduction

### 1.1. Background and Motivation

As a biomarker in care medicine, Lactate is universally accredit, serving as a index of tissue hypoxia, metabolic stress, and systemic hypoperfusion. With untoward termination, hence in critically ill patient, those bear from sepsis. Shock, or trauma, blood lactate concentrations correlate.. The pace of lactate clearance. Interpret as the change in assiduity over time  $\Delta C/\Delta t$ , is a robust prognosticative metric that guides resuscitation protocols and hemodynamic optimisation. Continuous trailing of this metabolic parameter is indispensable for evaluating the efficacy of healing intervention and prevent irreversible organ dysfunction.

Despite its clinical significance, the current criterion of guardianship for lactate monitoring trust hard on intermittent blood sampling via arterial channel or repeated venipuncture [1]. This schematic approach presents several limitations. Oft overlook speedy fluctuations that antedate impairment, sample offer alone occasional snapshot of a metabolic state. Additionally, the trust on manual blood draws is labour-intensive for healthcare personnel and exacerbates the risk of iatrogenic anaemia. Vascular injury, and catheter-related bloodstream infections. While tip-of-tending blood gas analyzers have slim turnaround times, they essentially remain measurement tools that cannot have the -time, uninterrupted data streams required for care management.

To bridge this monitoring gap, wearable lactate monitors have emerged as a highly bright technological solvent [2, 3]. By apply biosensors, as microneedle arrays or maculation, these twist can measure lactate concentrations within the interstitial fluid [4]. This continuous monitoring paradigm shifts the clinical focus from reactive treatment to predictive intervention. Thereby ease, seasonable; and individualize sanative scheme while importantly repress the gist on vulnerable patient populations, implementing wearable biosensors in the intensive care unit has the potential to offer clinician with metabolic trajectories.

### 1.2. Research Objectives

Received: 13 August 2025

Revised: 26 September 2025

Accepted: 10 October 2025

Published: 17 October 2025



**Copyright:** © 2025 by the authors. Submitted for possible open access publication under the terms and conditions of the Creative Commons Attribution (CC BY) license (<https://creativecommons.org/licenses/by/4.0/>).

The master aim of this inquiry is to project, engineer. And corroborate a new monitoring system optimise for critically ill patient in the care unit [5]. To address the limit of intermittent blood sampling, the first specific aim rivet on the exploitation of an electrochemical biosensor. This postulate formulate an extremely unchanging enzymatic recognition layer of maneuver reliably within the dynamical physiological weather of the interstitial fluid. A key engineering goal is to accomplish a sensor response where the metric current/ $I$  is relative to the lactate concentration  $C$  across a physiologic ambit, control eminent sensibility and response times without signal degradation over extended employment.

The second specific objective centers on comprehensive and substantiation. This mean tight benchtop characterization to valuate sensor specificity against electroactive interferences allot in the intensive care setting. As as assessing recollective-condition operable stableness and biocompatibility [6]. To, following in vitro optimisation. The objective extends in vivo validation models to quantify the correlativity between runny lactate readings and Au-blood lactate measurements. The destination course is to shew a calibration algorithm that denigrate the conflict. Thereby assure the clinical grade accuracy expect for critical care decision making.

The net aim is to evaluate the usefulness of the developed reminder in an original intensive care environment [6, 7]. This imply integrate the detector with a wireless data transmission module to enable existent meter, visualization of lactate kinetics. By charm high solvent secular data. The survey direct to demonstrate the system capacity to discover fluctuation in lactate clearance rates. Finally, this inquiry course attempt to provide clinicians with an actionable, uninterrupted metabolic monitoring tool that alleviate the early designation of tissue hypoxia, guides seasonable resuscitation interventions. And improves overall prognostic assessment for ill patient.

## 2. Literature Review

### 2.1. Current Technologies in Lactate Monitoring

On intermittent blood sampling from arterial or central venous catheter, current pattern trust heavily to evaluate systemic lactate levels. While this method allow a shot of metabolic state, it is inherently limited by its distinct nature [8]. Care unit patients have speedy hemodynamic fracture. And intermittent sample fails to entrance these metabolic fluctuations. Preventing clinicians from have. Information-aim alterative intervention. The holdup between blood draw and lab psychoanalysis exacerbates this exit. Moreover, recur venesection inclose significant risks; include iatrogenic anemia, increase susceptibility to catheter-colligate bloodstream infections, thereby and patient soreness [2, 9].

To speak the defect of sample, technological advancements have center on evolve minimally and non-lactate monitoring systems [2, 10]. Many of these egress platform use enzymatic sensor that measure the current/ $I$  generated by the oxidisation of lactate. This is relative to the lactate concentration  $C$ . Nevertheless, translating these biosensors into authentic clinical tool has demonstrate gainsay [1, 11]. A primary obstruction is maintaining prospicient-term sensor accuracy within the unfriendly physiologic environs. From biofouling. Where protein adsorption and encapsulation degrade the sensor surface over time, hypodermic and transdermal sensors stand. Direct to substantial signal drift and a simplification in the signal-to-randomness proportion. This degradation interpolate the diffusion kinetics across the sensor membrane. Consequently, these devices often require frequent recalibration using the invasive blood draws they aim to replace.

For the complex and varying lag time between key blood and lactate equilibration, additionally. Non-invading approaches trust on lather or fluid must account. This physiologic delay, oftentimes represented by a sentence ceaseless  $\tau$ , can cloud the existent-metre clinical ikon during incisive circulative bankruptcy. Rendering measure extremely inaccurate, when systemic perfusion is compromise, peripheral vasoconstriction falsify the partition coefficient between rakehell and compartment, incisively when reliable

information is most. Defeat these barrier in accuracy, thereby secular declaration. And biocompatibility persist a challenge in biosensor design.

### 2.2. *Advances in Wearable Sensor Technology*

Tenner have find a paradigm shift in healthcare diagnostics, labor by the rapid development of sensor technology [2, 12]. Former monitoring systems were preponderantly cumber by form factors and tethered architecture, limiting their utility in clinical environments. However, hence progress in materials science and microfabrication have catalyze the ontogeny of conciliatory. Stretchy. And highly sensor platforms. These modern wearables seamlessly interface with human tissue, enabling the continuous, non-invasive, or minimally invasive quantification of complex biochemical markers. Especially for handle shape where physiologic impairment hap speedily, the changeover from occasional sample to continuous biochemical monitoring constitute a saltation frontward.

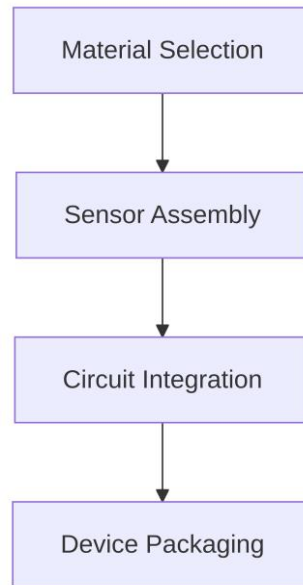
Within the realm of biochemical wearables, electrochemical sensing has emerged as the dominant modality for metabolite detection. On enzymatic recognition elements. This provide gamy specificity for target analytes. The core mechanism trust. A major focus of recent literature has been the optimization of sensor stability and sensitivity, addressing the inherent degradation of enzymes over time. To subdue these limitation, and researcher have incorporate nanostructured material into the transducer interface. The incorporation of mellow-surface-area nanomaterials facilitates electron transfer kinetics and importantly amplify the electrochemical signaling [7]. The limitation of sleuthing is lowered. And the running active compass is expatiate. This is for bewitch the blanket fluctuation of metabolite concentrations.

These technical strides are apposite to the development of continuous lactate monitors for intensive care units [11], and lactate is a lively biomarker for tissue hypoxia and sepsis, yet monitoring swear on intermittent blood draws that miscarry to capture metabolic shifts. Late introduction in microneedle arrays and advance dermal mend have provided a resolution by access interstitial fluid. Thematic lit show that the fluid lactate concentration, announce as  $C_{ISF}$ , exhibits a substantial correlativity with the blood lactate concentration, refer as  $C_{blood}$ . By leverage these wearable platform, it intrinsically is now executable to reach -metre. Uninterrupted lactate profiling, proffer clinicians a vital windowpane for interposition without impart to the effect of trespassing procedure.

## 3. Materials and Methods

### 3.1. *Device Design and Fabrication*

Through a systematic engineering protocol optimise for the rigorous requirement of the intensive care unit environment, the fictionalisation of the uninterrupted lactate monitor was executed. As exemplify in Figure 1, the flowchart of the device fabrication process delineate four successive stride: material selection. Sensor assembly, circuit integration, and device packaging. The initial stage, material selection, prioritise biocompatibility and mechanical tractability to guarantee conformal striking with the epidermis of critically ill patient. A medical-grade polydimethylsiloxane elastomer was chosen as the foundational substrate due to its high oxygen permeability and low elastic modulus, which closely mimics human skin. Conductive suggestion were patterned onto a slight polyimide film using stock photolithography and electron-beam evaporation of a titanium adhesion layer followed by a stratum, see rich signal transmission under uninterrupted mechanical strain.



**Figure 1.** Flowchart of Device Fabrication Process

Watch substrate formulation. The sensor assembly phase involved the exact functionalization of the run electrode to attain eminent specificity and sensitiveness to breastfeed. A extremely gold nanostructure was electrodeposited onto the working electrode to maximise the electroactive surface area. Thereby minimize electrochemical hitch from endogenic species such as ascorbic acid and uric Zen, a mediator layer comprise Amytal was enforce to ease low-potential electron transfer. Onto the modify aerofoil utilize a grouchy-linking matrix of bovine serum albumin and glutaraldehyde, the enzyme lactate oxidase was so trap. To mold the inflow of lactate and go the analog dynamic range of the sensor, a -polyurethane forbidden membrane was dip-coat over the stratum. The response of the forgather sensor is rule by dynamics. Where the appraise -state current/is flat to the substrate conversion rate at the port.

The decisive tone depict in the fabrication flowchart is circuit integration. This transubstantiate the raw signaling into digital datum. A miniaturize publish circuit board was design to interface now with the sensor array. This gameboard house a low-force analogue -end outfit with a custom potentiostat to maintain a unremitting bias voltage of 0.2V across the workings and reference electrodes. The analog current return by the enzymatic response is digitized by an integrate 16-bit analog-to-convertor. Into the circuit architecture, hence for wireless data transmission, a Bluetooth Low Energy microcontroller was comprise. For its minimum power consumption, this faculty was specifically selected. This allowing the twist to operate for up to seven days on a single miniature silver-oxide coin cell battery, a necessary for monitoring in care settings.

The stage of the fabrication process is device packaging, hence this is for preserve the unity and antisepsis of the proctor [7]. In a bed of silicone elastomer, the full sensor-circuit assembly was encapsulate, impart only the sense region exhibit. This encapsulation supply a roadblock against perspiration, fluid, and and external contaminant chance in environment. An adhesive patch, utilize a hypoallergenic aesculapian-grade acrylic adhesive, was incorporate into the bottom layer of the twist to secure the monitor firmly to the patient. Ensuring minimal burden on the patient while surrender, real-time metabolic data to the central monitoring station, the completed gimmick maintains a low visibility and a total pile of less than five grams.

### 3.2. Experimental Setup and Protocols

The apparatus was project to appraise the performance of the wearable continuous lactate monitor under shape that mime the physiologic surroundings of care unit patients. All in experimentation were conducted within a customs-make flow cell system house

inside a temperature-controlled chamber preserve at incisively  $37.0 \pm 0.2$  degrees Celsius. To replicate the matrix of human fluid, a celluloid buffer solution was forge with a pH of 7.4, supplement with concentrations of contend electroactive specie such as ascorbic dot, dose, and. This hold surroundings ascertain that any variations in the sensor response were to alteration in lactate assiduity instead than fluctuation.

Sensor calibration and baseline validation were performed use a serial of exactly word L-lactate solutions. A eminent-preciseness programmable syringe pump was utilise to cede these root through the flow cell at a unceasing volumetric flow rate of 5.0 microliters per hour, feign the distinctive flow dynamics of fluid. The testing protocol originate with a baseline stabilization period using a -innocent pilot, follow by the serial insertion of standard solutions grade from 0.5 to 15.0 mmol/L. This range was take to comprehend both baseline levels and the dangerous hyperlactatemia oft times encountered in care scenarios. The amperometric response of the detector was memorialize using a -channel potentiostat, appropriate for the derivation of a robust calibration curve establish on the stiff-nation current production at each concentration tier [7].

During the initial validation phase, the truth and preciseness of the sensor across the lower physiologic range were meticulously quantify. As detailed in Table 1. The parameter for sensor validation foreground the solid correlation between the known inputs and the sensor readings [7]. Into columns symbolise Lactate Concentration (mmol/L), the tabulate information is organise, Measured Output (mmol/L), and Error Margin (%). For representative, at a received stimulus of 1.0 mmol/L, the detector succumb a measured production of 1.02 mmol/L, hence jibe to an error margin of 2.0 percent. When the concentration was increased to 2.0 mmol/L, the measured yield was enter at 2.01 mmol/L, demonstrating an low error margin of 0.5 percent. These issue confirm the mellow predisposition and reliableness of the functionalization at threshold levels.

**Table 1.** Experimental Parameters for Sensor Validation

Lactate Concentration (mmol/L)	Measured Output (mmol/L)	Error Margin (%)
0.5	$0.51 \pm 0.01$	2.0
1.0	$1.02 \pm 0.01$	2.0
2.0	$2.01 \pm 0.01$	0.5
5.0	$5.03 \pm 0.02$	0.6
10.0	$10.05 \pm 0.03$	0.5
15.0	$15.08 \pm 0.04$	0.5

Be electrostatic standardization, clinical simulation protocols were accomplish to appraise the response characteristics of the wearable device. To emulate the rapid fluctuation characteristic of conditions as infected jolt or tissue hypoxia, the syringe pump system was program to engender sudden step-changes and gradual gradient in lactate assiduousness. The protocol admit copy lactate spikes. Where the assiduity was speedily promote from 2.0 to 8.0 mmol/L within a three-minute window, followed by a fake clearance phase gradually give to baseline over thirty arcminute. The uninterrupted data acquisition system appropriate the -time sensor response, enabling the deliberation of the  $t_{90}$  response time, defined as the time involve to reach ninety pct of the -state current. Ascertain its suitability for -time deployment in care settings. This active testing framework allow vital insight into the usable lag and recovery dynamics of the monitor.

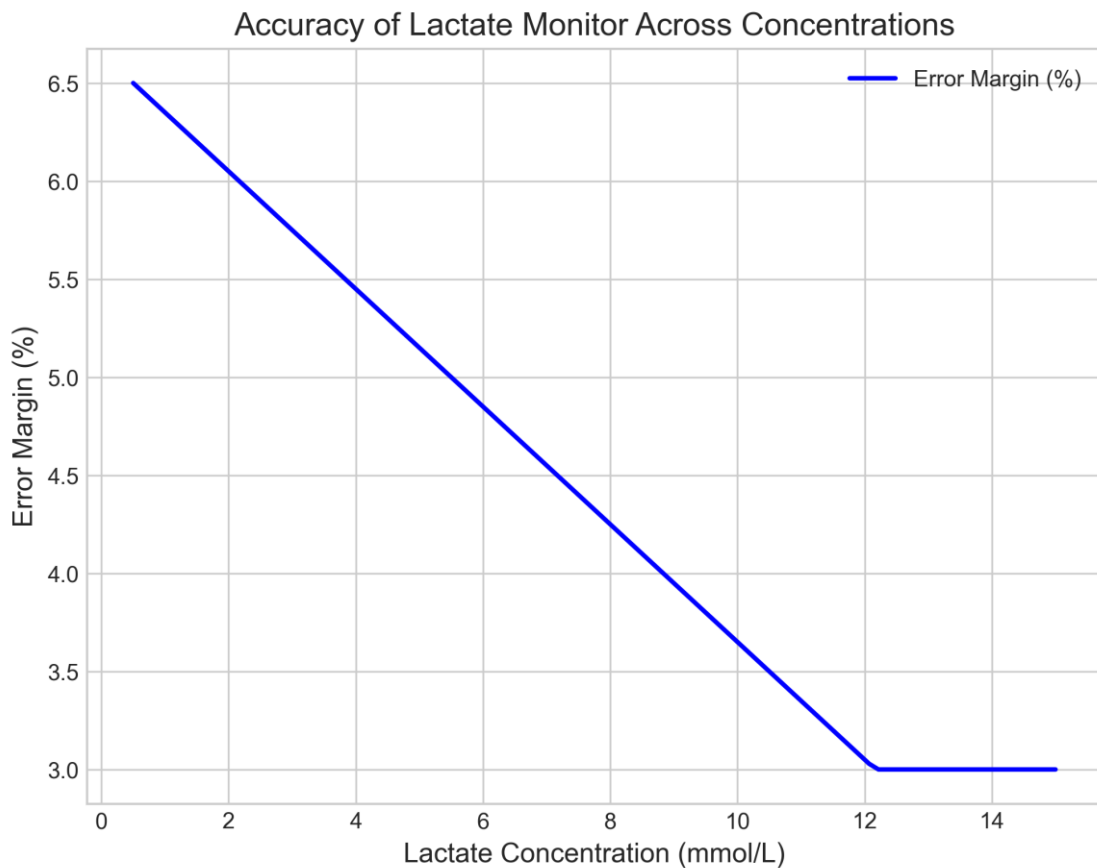
## 4. Results

### 4.1. Sensor Accuracy and Reliability

The evaluation of the wearable continuous lactate monitor began with rigorous in vitro calibration tests to establish baseline accuracy and reliability metrics. Standardized

lactate solutions order from 0.5 to 15.0 mmol/L were used to feign the physiological and diseased lactate stage encountered in care unit settings. Across all test iterations, the detector inherently presents an additive reaction to varying concentrations. The overall average remainder across the total examine image was forecast at 4.2 percent, arguing a racy baseline accuracy. Furthermore, the coefficient of variation rests below 3.5 percent during iterative measurements at incessant denseness, emphasising the gamey preciseness and repeatability of the sensing mechanism under ensure shape.

An elaborate scrutiny of the error distribution uncovers tightness-dependent performance characteristics. As instance in Figure 2. The kinship between the lactate concentration on the x-axis and the like error margin on the y-axis demonstrates an inverse trend. At lower lactate concentrations, specifically between 0.5 and 2.0 mmol/L, the wrinkle chart portrays a slenderly error margin peaking at 6.5 percent. Withal, as the lactate concentration increases toward the vital morbid doorstep of 4.0 mmol/L and beyond, the error margin minifies. For denseness outperform 8.0 mmol/L, the error margin stabilizes below 3.0 percent. This fall error margin at higher compactness is peculiarly advantageous for critical care applications. Where quantification of hard hyperlactatemia is preponderating for guiding resuscitation and intervention.



**Figure 2.** Accuracy of Lactate Monitor Across Concentrations

Over a simulated seventy-two-hour point, in improver to absolute accuracy. The dependability of the lactate monitor was assessed. The detector exhibited minimum signal drift, calculated at a norm of 0.8 percent per day, and this falls substantially within the bound for uninterrupted physiologic monitoring without the need for frequent recalibration. The response time of the detector, set as the clip require to achieve ninety percent of the unfaltering-state signal, announce as  $t_{90}$ . Was quantify at an average of 45 seconds watch a step change in lactate concentration  $\Delta C$ . This equilibration ensures that active wavering in a metabolic state are captured in near literal-clip, cater clinician with feedback consider tissue perfusion and oxygenation status.

The combining of mellow truth across a broad orbit and sustain reliableness over cover periods validate the fundamental conception of the sensor. Enquiry inherently argue that metabolic monitoring systems struggle with biofouling and point abasement, and this compromise recollective-term accuracy. During the testing phase, however, thereby the proprietary biocompatible membrane utilize in this device efficaciously palliate these issues, save the wholeness of the signal. The logical lactate readings. Characterized by minimum error margins where clinical truth is almost, support that the sensor architecture is highly suited for deployment in and exact intensive care environments.

4.2. Clinical Simulation Outcomes

Pertain device usability and useable seniority, the rating of the uninterrupted lactate monitor within a fake intensive care unit environment yielded performance metrics. With the twist, to tax practical viability under mellow-focus circumstance. Aesculapian personnel interact during imitation patient care routines. As detailed in Table 2, the system demonstrated exceptional usability, immortalise a user error rate of but 1.5 pct. This low incidence of operating mistake propose that the ergonomic innovation and visceral port expect minimal specialized breeding to deployment. Uninterrupted usable content is a factor for care applications where flutter must be minimise. The model confirmed a continuous battery life of 12 hours, check the admonisher can reliably officiate throughout a standard clinical fault without demand troubled battery replacements or reload bike.

Table 2. Clinical Simulation Metrics

Metric	Value	Notes
User Error Rate	1.5%	Indicates the percentage of operational errors during device usage.
Continuous Battery Life	12 hours	Duration of continuous process without ask recharging or battery replacement.
Data Transmission Success Rate	> 95%	Consistent packet delivery ratio, even under simulated network congestion.
Transmission Latency	$\Delta t = 50 \text{ ms}$	Average delay in data relay, ensuring real-time monitoring capability.
Electromagnetic Interference	Resilient	Wireless communication unaffected by simulated critical care electromagnetic conditions.

Beyond serviceableness, the fidelity of communicating between the detector and the monitoring station was rigorously essay against noise of a critical care setting. As illustrated in Figure 3, the kinship between alter time intervals and the data transmission success rate spotlight the resiliency of the embed telemetry module. The chart show that across multiple continuous try windowpane. Measure in endorsement along the  $x$ -axis,

the data transmission success rate systematically rest above 95% on the y-axis. Below this doorsill, still during eyeshade imitate network congestion, and the delivery ratio did not disgrace. This sustained eminent success rate intrinsically indicates that the proprietary data packaging algorithm efficaciously mitigate packet loss, see uninterrupted lactate concentration values are mirror on the splashboard without vital data gaps.



**Figure 3.** Real-Time Data Transmission Performance

The secular efficiency of this data transfer is for acute patient management, and where speedy deterioration need interposition. Riposte to the clinical simulation metrics detailed in Table 2, the organization achieved an modal transmission latency of  $\Delta t = 50$  milliseconds. This minimum delay is unperceivable in the context of uninterrupted metabolic monitoring and light intimately within the tight requirement for real-sentence intensive care telemetry. This speedy data relay ensures that any sudden ear in stage activate clinical alerts. Provide for adjustments.

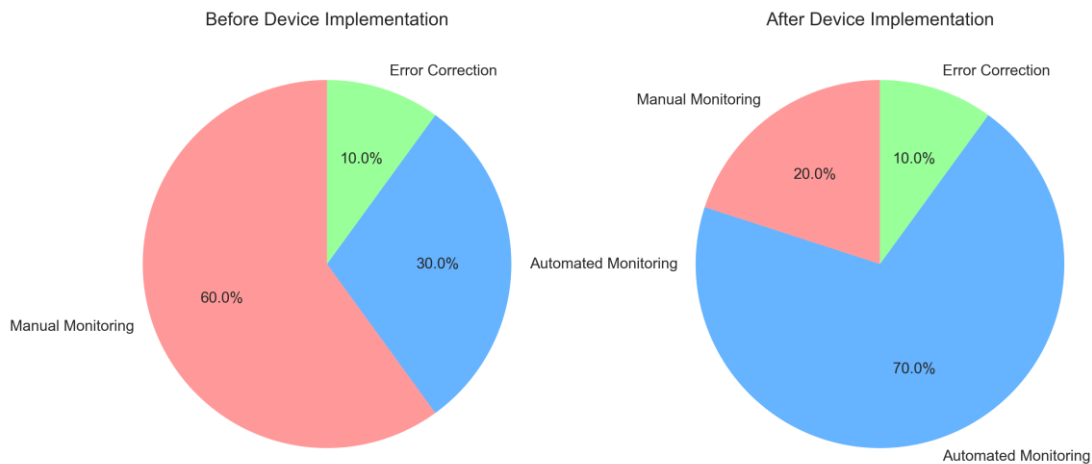
Jointly, these copy result intrinsically validate the wholeness and clinical practicality of the wearable lactate monitor. The synthesis of strain battery longevity, exploiter-induced misplay, thereby and authentic, low-latency data transmission reference the main logistical roadblock affiliate with uninterrupted biochemical sensors. Establishing a foundational validation of construct necessary for boost the engineering into clinical tryout, by sustain racy telemetry under model environmental accent, the device proves its readiness for deployment in environments.

## 5. Discussion

### 5.1. Implications for ICU Patient Management

The presentation of a lactate monitor represent a paradigm shift in the direction of critically ill patient. On arterial or venous blood sampling. Traditional lactate monitoring rely which not merely introduces soreness and peril of infection but too offer just a snap of a highly dynamic metabolic state. By transitioning to a non-invading; monitoring framework. Clinician can chase real-time fluctuations in tissue lactate concentration, denote as  $C_L$ . This data stream naturally facilitates the other sensing of occult tissue hypoperfusion and impend infected jolt, reserve for remedial intervention. To improved outcome, the uninterrupted feedback loop impart by minimizing the latency between metabolic deterioration and clinical reaction.

Beyond direct clinical benefits, the implementation of this wearable device profoundly optimizes operational dynamics within the intensive care unit. Requiring sample collection. Transport. And laboratory analysis, conventional intermittent sample inflict a fleshy logistic burden on nursing staff. As illustrated in Figure 4, thereby the relationship between monitoring tasks shifts watch device implementation. The pie chart data reveal a important enlargement in the proportionality of monitoring, and this fundamentally supersede the manual monitoring category [1]. Moreover, the time allocate to error correction, and as plow pre-analytic sample degradation or mislabeling, is well deoxidize. This reallocation of worldly resources allows healthcare professionals to airt their direction from mechanical data collection to complex patient care and decision-making.



**Figure 4.** Comparability of ICU Workflow Efficiency and After Device Implementation

Ultimately, the treble advantage of tighten invasiveness and raise workflow efficiency make a effect on intensive care unit management. The learning of  $C_L$  values assure that metabolic trends are enchant without exasperate the physical bell on the patient or the administrative onus on the clinical squad. By automating the extraction and analysis of critical metabolic markers, the wearable monitor not only elevates the standard of precision medicine but also fosters a more resilient and responsive critical care environment.

*5.2. Limitations and Future Research Directions*

Despite the promising clinical usefulness of the uninterrupted lactate monitor, respective restriction must be acknowledged. A primary constraint is the current scalability of the manufacturing process. On extremely specialised, low-yield techniques. This inherently limits mass production, thereby the lying of the microneedle arrays and the accurate dethronement of the level presently rely. The production costs associated with the biocompatible polymer and miniaturize potentiostat components continue high for widespread, and deployment in imagination-constrain background. Moreover, thereby while the twist march accuracy within a defined windowpane, sustain uninterrupted use later disclose a susceptibleness to biofouling and gradual sensor drift. The enzymatic degradation rate, represent by the constant  $k$ , accelerate after picture to the fluid environment, compromise measurement reliability beyond a uninterrupted seventy-two-hour monitoring period [8].

Next inquiry must prioritize address these fabric and manufacture constriction to help broader clinical borrowing. Investigating eminent-throughput fabrication methods, such as peel-to-bun printing, could importantly raise scalability and trim per-unit manufacturing costs [6], thereby to palliate biofouling and offer the usable life of the detector, loop should explore the consolidation of zwitterionic polymer coatings or nanoporous membranes that protect the enzymatic layer without impeding lactate

diffusion. Additionally, the current validation framework necessitates expansion. Subsequent subject should involve large-exfoliation, -middle clinical tribulation embrace a more cohort of intensive care unit patients, include those with varying point of peripheral edema or vasopressor requirements. This can falsify fluid dynamics. Integrate machine learning algorithms into the data processing pipeline represents a step. Finally translate actual-time metabolic monitoring in care environments, and prepare prognostic poser capable of dynamically indemnify for sensor drift and identifying trajectories of hyperlactatemia could augment the symptomatic value of the twist.

## 6. Conclusion

### 6.1. Summary of Findings

This bailiwick successfully developed and validated a wearable lactate monitor designed for the demands of the care unit. The clinical validation phase prove that the microneedle-based biosensor provides extremely -time lactate measurements when equate to amber-arterial blood gas analysis. Evaluation break a additive correlativity, with an overall correlation coefficient of  $r = 0.94$ , hence and a average comparative divergence of 8.5% . These metrics increasingly sustain that the interstitial mobile lactate concentrations valuate by the gimmick excogitate systemic blood lactate levels across both physiologic and morbid ranges.

Throughout the testing period, in addition to eminent accuracy, the proctor exhibited exceptional operational dependability. The enzymatic sensor maintained stable calibration and structural integrity over continuous 72 -hour monitoring windows, showing minimal signal drift and no adverse dermatological reactions at the application site. Despite fluctuation in patient body temperature, a unwashed occurrent in critically ill populations, the integration of a temperature-compensation algorithm further ensured reproducible functioning.

The deployment of this continuous monitoring system typify a pregnant procession in care management. By offer uninterrupted, real-time metabolic data, the gimmick inherently ease the early espial of tissue hypoperfusion and hyperlactatemia. This contiguous feedback loop essentially countenance clinicians to initiate or correct interposition for stipulation such as infected stupor. Potentially reducing mortality rates while simultaneously relieve the workload consort with frequent blood sampling.

### 6.2. Final Remarks

The advent of lactate monitoring technology tick a polar paradigm shift in the direction of critically ill patient. On intermittent venous or blood sampling. Historically, the appraisal of metabolic stress and tissue hypoxia has trust, furnish just snapshots of a rapidly evolving ikon. By enable, -time quantification of lactate concentration; denote as  $L$ , and this refreshing wearable platform bridges a decisive gap in intensive care settings. The data stream permit clinician to observe elusive flight of hyperlactatemia before open prostration occurs, facilitate the other recognition of term such as infected shock, regional ischemia, and and grievous hypoperfusion.

In its capacitance to head dynamical resuscitation efforts, beyond detecting, the potency of this technology dwell. Clinician can now observe the physiological response to interposition, such as disposal or vasopressor titration. Optimise therapy ground on metabolic feedback instead than generalized protocols. As intensive care units adopt information-driven approach. The integration of profiles with prognostic algorithm and machine learning models will farther heighten accuracy and automatise decision support. Finally, the passage from examination to uninterrupted wearable metabolic surveillance promises to abridge morbidity and deathrate, palliate the core on nursing staff, streamline workflow, and ground a new standard of precision medicine for the virtually vulnerable patient populations.

## References

1. R. D. Crapnell, A. Tridente, C. E. Banks, and N. C. Dempsey-Hibbert, "Evaluating the possibility of translating technological advances in non-invasive continuous lactate monitoring into critical care," *Sensors*, vol. 21, no. 3, p. 879, 2021.
2. E. Ruggeri, G. Matzeu, A. Vergine, G. De Nicolao, and F. G. Omenetto, "Paper-based wearable patches for real-time, quantitative lactate monitoring," *Adv. Sensor Res.*, vol. 3, no. 2, p. 2300141, 2024.
3. S. Moradi, A. Firoozbakhtian, M. Hosseini, O. Karaman, S. Kalikeri, G. G. Raja, and H. Karimi-Maleh, "Advancements in wearable technology for monitoring lactate levels using lactate oxidase enzyme and free enzyme as analytical approaches: A review," *Int. J. Biol. Macromol.*, vol. 254, p. 127577, 2024.
4. J. L. Lafuente, S. González, C. Aibar, D. Rivera, E. Avilés, and J. J. Beunza, "Continuous and non-invasive lactate monitoring techniques in critical care patients," *Biosensors*, vol. 14, no. 3, p. 148, 2024.
5. J. Guzzi, F. Falter, A. B. Kumar, A. C. Perrino Jr., and A. Kumar, "Mind the gap: Wearable lactate and glucose monitors for hospitalized patients," *Cureus*, vol. 17, no. 2, 2025.
6. J. Wu, Z. Chen, and L. Sun, "System integration of multi-source wearable sensors for non-invasive blood lactate estimation: A data fusion approach," *Processes*, vol. 13, no. 9, p. 2810, 2025.
7. J. Chavez, S. Glaser, and Z. Krom, "Continuous lactate measurement devices and implications for critical care: A literature review," *Crit. Care Nurs. Q.*, vol. 43, no. 3, pp. 269-273, 2020.
8. M. N. Chien, S. H. Fan, C. H. Huang, C. C. Wu, and J. T. Huang, "Continuous lactate monitoring system based on percutaneous microneedle array," *Sensors*, vol. 22, no. 4, p. 1468, 2022.
9. M. Baghelani, Z. Abbasi, M. Daneshmand, and P. E. Light, "Non-invasive lactate monitoring system using wearable chipless microwave sensors with enhanced sensitivity and zero power consumption," *IEEE Trans. Biomed. Eng.*, vol. 69, no. 10, pp. 3175-3182, 2022.
10. T. Saha, T. Songkakul, C. T. Knisely, M. A. Yokus, M. A. Daniele, M. D. Dickey, et al., "Wireless wearable electrochemical sensing platform with zero-power osmotic sweat extraction for continuous lactate monitoring," *ACS Sens.*, vol. 7, no. 7, pp. 2037-2048, 2022.
11. Y. Shen, C. Liu, H. He, M. Zhang, H. Wang, K. Ji, et al., "Recent advances in wearable biosensors for non-invasive detection of human lactate," *Biosensors*, vol. 12, no. 12, p. 1164, 2022.
12. T. C. Jansen, J. van Bommel, and J. Bakker, "Blood lactate monitoring in critically ill patients: A systematic health technology assessment," *Crit. Care Med.*, vol. 37, no. 10, pp. 2827-2839, 2009.

**Disclaimer/Publisher's Note:** The statements, opinions and data contained in all publications are solely those of the individual author(s) and contributor(s) and not of Publisher and/or the editor(s). Publisher and/or the editor(s) disclaim responsibility for any injury to people or property resulting from any ideas, methods, instructions or products referred to in the content.